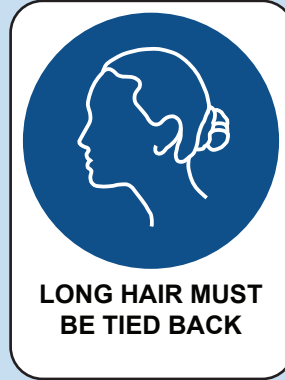
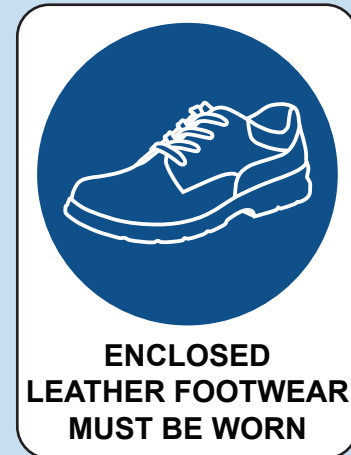
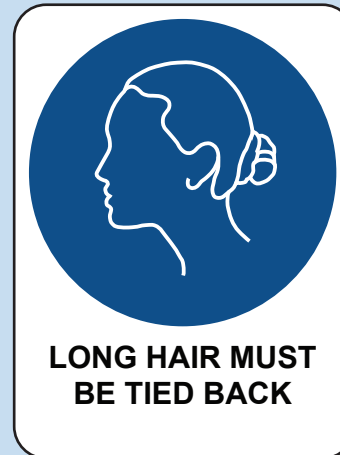
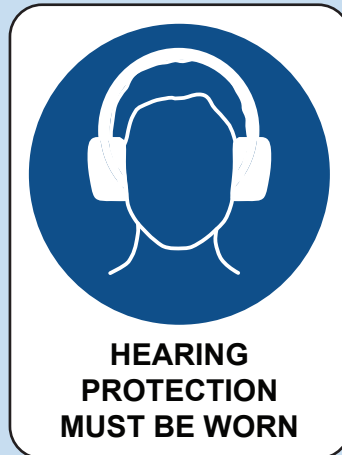


# Timber Lathe



# Track Guide Saw



# Table Saw



**SAFETY GLASSES  
MUST BE WORN**



**NO LOOSE  
CLOTHING**



**LONG HAIR MUST  
BE TIED BACK**



**ENCLOSED  
LEATHER FOOTWEAR  
MUST BE WORN**

# Sliding Panel Saw



**SAFETY GLASSES  
MUST BE WORN**



**HEARING  
PROTECTION  
MUST BE WORN**



**NO LOOSE  
CLOTHING**



**LONG HAIR MUST  
BE TIED BACK**



**ENCLOSED  
LEATHER FOOTWEAR  
MUST BE WORN**

# Drill Press



**SAFETY GLASSES  
MUST BE WORN**



**FACE SHIELD  
MUST BE WORN**



**ENCLOSED  
LEATHER FOOTWEAR  
MUST BE WORN**



**NO LOOSE  
CLOTHING**



**LONG HAIR MUST  
BE TIED BACK**

# Disc Sander



**SAFETY GLASSES  
MUST BE WORN**



**NO LOOSE  
CLOTHING**



**LONG HAIR MUST  
BE TIED BACK**



**DUST MASK  
MUST BE WORN  
IF REQUIRED**



**ENCLOSED  
LEATHER FOOTWEAR  
MUST BE WORN**

# Scroll Saw



**SAFETY GLASSES  
MUST BE WORN**



**NO LOOSE  
CLOTHING**



**LONG HAIR MUST  
BE TIED BACK**



**ENCLOSED  
LEATHER FOOTWEAR  
MUST BE WORN**

# Thicknesser



**SAFETY GLASSES  
MUST BE WORN**



**HEARING  
PROTECTION  
MUST BE WORN**



**NO LOOSE  
CLOTHING**



**DUST MASK  
MUST BE WORN  
IF REQUIRED**



**LONG HAIR MUST  
BE TIED BACK**



# Jigsaw



**SAFETY GLASSES  
MUST BE WORN**



**ENCLOSED  
LEATHER FOOTWEAR  
MUST BE WORN**



**DUST MASK  
MUST BE WORN  
IF REQUIRED**



**NO LOOSE  
CLOTHING**



**LONG HAIR MUST  
BE TIED BACK**



# Biscuit Jointer



**SAFETY GLASSES  
MUST BE WORN**



**NO LOOSE  
CLOTHING**



**LONG HAIR MUST  
BE TIED BACK**



**ENCLOSED  
LEATHER FOOTWEAR  
MUST BE WORN**



**DUST MASK  
MUST BE WORN**



# Orbital Sander



**SAFETY GLASSES  
MUST BE WORN**



**NO LOOSE  
CLOTHING**



**ENCLOSED  
LEATHER FOOTWEAR  
MUST BE WORN**



**DUST MASK  
MUST BE WORN**

# Spindle Sander



**SAFETY GLASSES  
MUST BE WORN**



**NO GLOVES**



**DUST MASK  
MUST BE WORN  
IF REQUIRED**



**LONG HAIR MUST  
BE TIED BACK**



**ENCLOSED  
LEATHER FOOTWEAR  
MUST BE WORN**

# Belt Sander - Portable



**SAFETY GLASSES  
MUST BE WORN**



**DUST MASK  
MUST BE WORN**



**NO LOOSE  
CLOTHING**



**ENCLOSED  
LEATHER FOOTWEAR  
MUST BE WORN**



**LONG HAIR MUST  
BE TIED BACK**



For more information see SANDER, BELT (FIXED) on Equipment Safety in Schools (ESIS)

# Belt Sander - Fixed



**SAFETY GLASSES  
MUST BE WORN**



**NO GLOVES**



**DUST MASK  
MUST BE WORN  
IF REQUIRED**



**NO LOOSE  
CLOTHING**



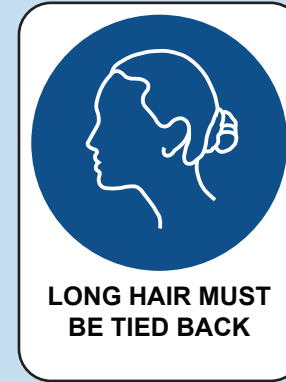
**LONG HAIR MUST  
BE TIED BACK**



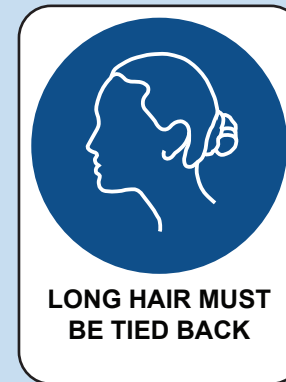
**ENCLOSED  
LEATHER FOOTWEAR  
MUST BE WORN**



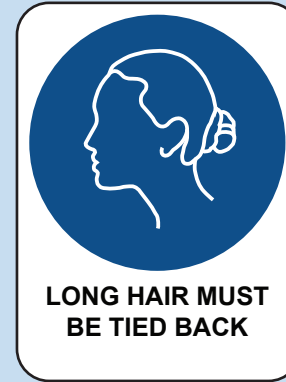
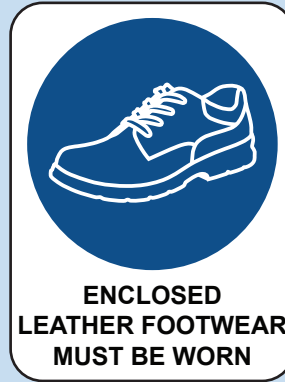
# Pedestal Grinder



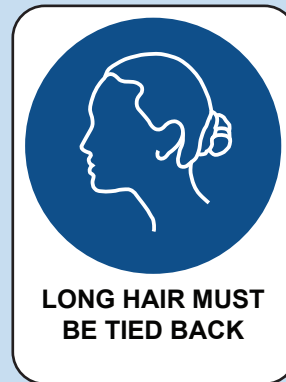
# Trimmer Router



# Router



# Drop and Slide Saw



# Drop Saw



**SAFETY GLASSES  
MUST BE WORN**



**NO LOOSE  
CLOTHING**



**LONG HAIR MUST  
BE TIED BACK**



**DUST MASK  
MUST BE WORN  
IF REQUIRED**



**ENCLOSED  
LEATHER FOOTWEAR  
MUST BE WORN**

For more information see SANDER, THICKNESS (DRUM) (FIXED) on Equipment Safety in Schools (ESIS)

# Drum Sander



**SAFETY GLASSES  
MUST BE WORN**



**NO GLOVES**



**DUST MASK  
MUST BE WORN  
IF REQUIRED**



**NO LOOSE  
CLOTHING**



**LONG HAIR MUST  
BE TIED BACK**



**ENCLOSED  
LEATHER FOOTWEAR  
MUST BE WORN**

# Bandsaw - Wood



**SAFETY GLASSES  
MUST BE WORN**



**NO GLOVES**



**DUST MASK  
MUST BE WORN  
IF REQUIRED**



**LONG HAIR MUST  
BE TIED BACK**



**ENCLOSED  
LEATHER FOOTWEAR  
MUST BE WORN**

# Hollow Chisel Mortiser



**SAFETY GLASSES  
MUST BE WORN**



**ENCLOSED  
LEATHER FOOTWEAR  
MUST BE WORN**



**NO LOOSE  
CLOTHING**



**LONG HAIR MUST  
BE TIED BACK**